



VL200120

LS041001:  
200ser Air Duct Part

AD410040:  
Flexibel connecting piece DN 150 flat

AD851041:  
VL Connecting piece flat 150mm

VV200010:  
Connecting strip series 200 ss

VV200020:  
Connecting strip series 200 black

## Vario downdraft ventilation 200 series 15 cm, Black VL200120

Can be combined with the cooktops of the Vario 200 series to a harmonic unity  
Highly efficient ventilation system at the cooktop integrated in the worktop  
Function for automatic, sensor-controlled power adjustment depending on the build-up of cooking vapours  
Minimal planning and easy installation  
Low-noise system with the motor AR 410 110  
Air extraction or air recirculation system

### Output

Power levels depend on the remote fan unit.

### Features

Control knobs with illuminated ring.  
3 electronically controlled power levels and 1 intensive mode.  
Automatic sensor-controlled performance adjustment of the ventilation system.  
Automatic sensor-controlled or manual run-on function.  
Large-scale metal grease filter with high grease absorption.  
Removable, dishwasher-safe grease filter unit.  
Grease filter and activated charcoal filter saturation indicator.  
Airflow-optimised interior for efficient air circulation.  
Interval ventilation, 6 min.  
Enamelled ventilation grille, dishwasher-safe.  
Air exhaust bend included in delivery.  
Overflow 250 ml capacity.

### Consumption data

Consumption data is referred to a configuration with the remote fan unit AR 403 122.  
Energy efficiency class A at a range of energy efficiency classes from A+++ to D.  
Energy consumption 48.3 kWh/year.  
Ventilation efficiency class A.  
Illumination efficiency class -.  
Grease filter efficiency class B.  
Sound level min. 56 dB / max. 71 dB normal mode.

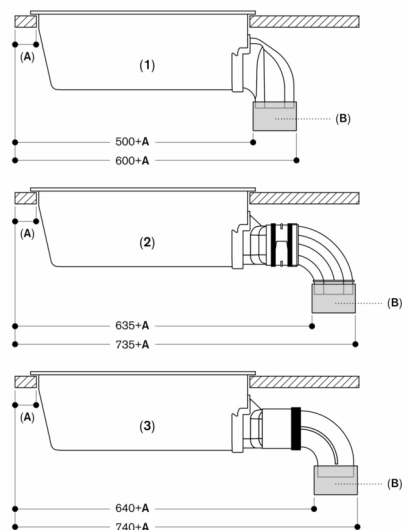
### Planning notes

The equivalent ducting length to ensure good performance is Lmax 26 m.  
For each VL one remote fan unit is recommended.  
Maximum cooktop width between two VL: 80 cm.  
If installed next to gas appliances, the ventilation moulding LS 041 001 is recommended to ensure maximum performance of the cooktop.  
When having installed the ventilation moulding LS 041 001 the wok pan WP 400 001 can not be used.  
When installing a ventilation hood with air extraction mode and a chimney-vented fireplace, the power supply line of the ventilation appliance needs a suitable safety switch.  
Air recirculation is not recommended in combination with Vario electric grill.  
For optimum performance in air recirculation we recommend an outflow surface area of at least 400 cm².

Please read additional planning notes on page xx.

### Connection

Connecting cable 1.7 m between VL and remote fan unit.

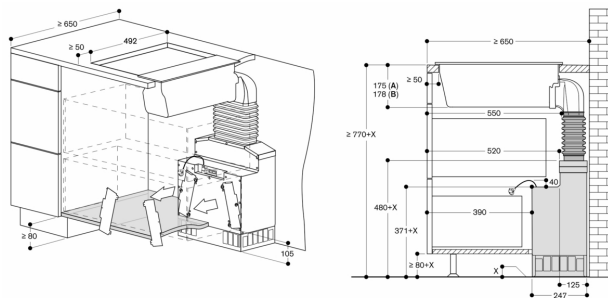


- 1: Direct installation  
 2: Installation with extension for extra deep worktop and plastic ducting:  
 – AD 851 041 (connecting piece for extension)  
 – AD 857 040 (flat duct connecting piece, plastic)  
 – AD 857 030 (flat duct bend, 90°, vertical, plastic)  
 3: Installation with extension for extra deep worktop and metal ducting:  
 – AD 851 041 (connecting piece for extension)  
 – AD 854 000 (flat duct connecting piece, metal)  
 – AD 854 030 (flat duct bend, 90°, vertical, metal)

A:  $\geq 50\text{mm}$

B: Connecting piece

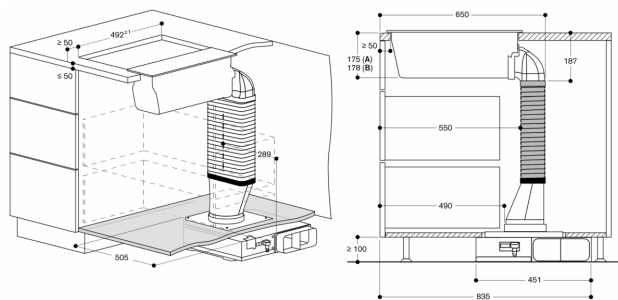
measurements in mm



A: Surface mounting  
 B: Flush mounting (only VL 414)

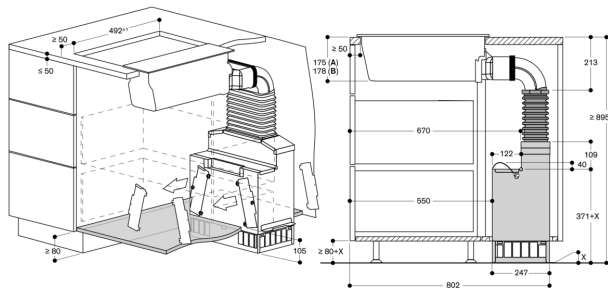
Not recommended for non-thermally insulated outer wall or floor ( $U \geq 0.5 \text{ W/m}^2\text{K}$ )

Measurements in mm



A: Surface mounting  
 B: Flush mounting (only VL414)

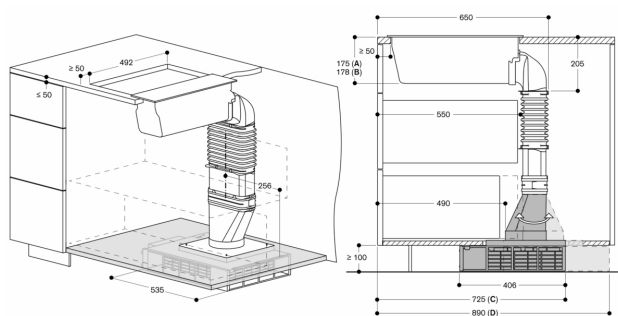
measurements in mm



A: Surface mounting  
 B: Flush mounting (only VL 414)

Not recommended for non-thermally insulated floor ( $U \geq 0.5 \text{ W/m}^2\text{K}$ )

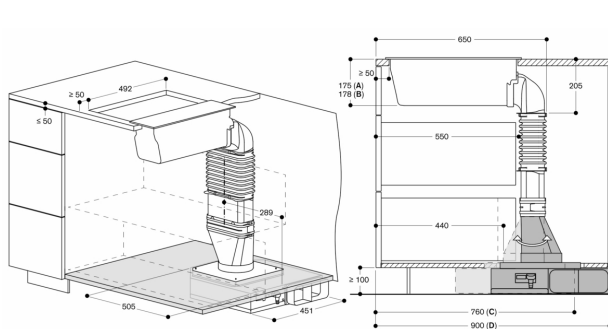
Measurements in mm



A: Surface mounting  
 B: Flush mounting (only VL 414)  
 C: Filter access from the front  
 Connecting piece flat/round towards the front  
 D: Filter access from the back  
 Connecting piece flat/round towards the back

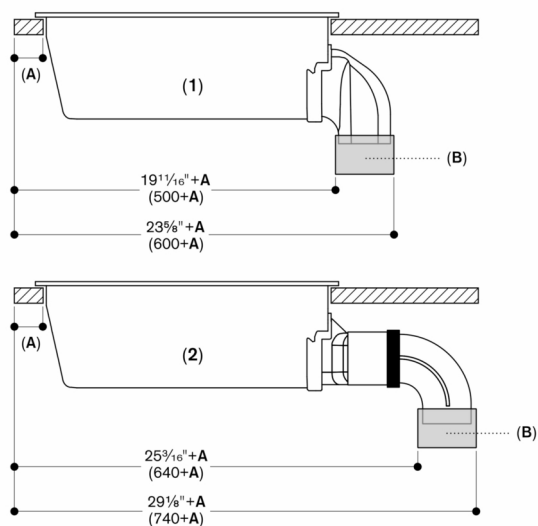
Not recommended for non-thermally insulated floor ( $U \geq 0.5 \text{ W/m}^2\text{K}$ )

Measurements in mm



A: Surface mounting  
 B: Flush mounting (only VL414)  
 C: Exhaust to the left. Flat/round connecting piece towards the front  
 D: Exhaust to the right. Flat/round connecting piece towards the back

measurements in mm

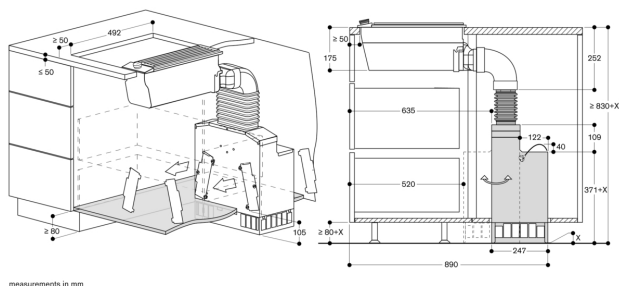
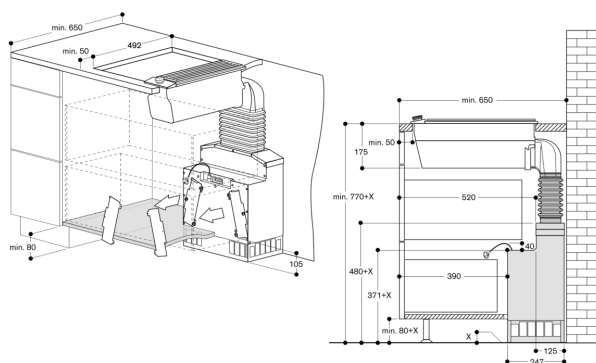
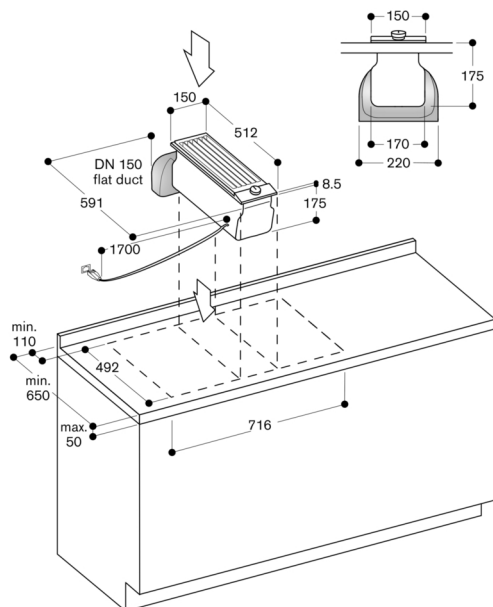


- 1: Direct installation  
 2: Installation with extension for extra deep worktop and metal ducting:  
 – AD 851 041 (connecting piece for extension)  
 – AD 854 000 (flat duct connecting piece, metal)  
 – AD 854 030 (flat duct bend, 90°, vertical, metal)

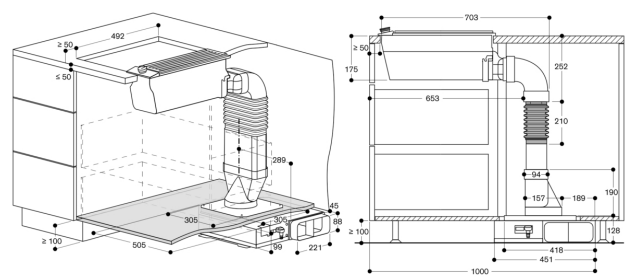
A:  $\geq 1\frac{15}{16}$ " (50)

B: Connecting piece

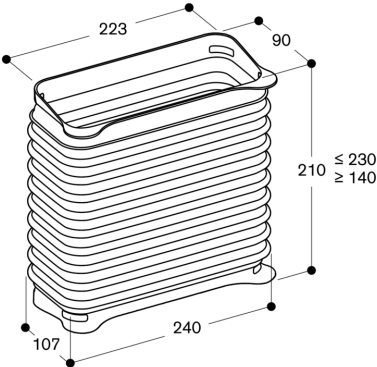
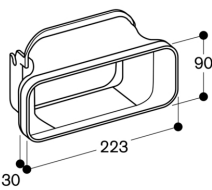
measurements in inches (mm)



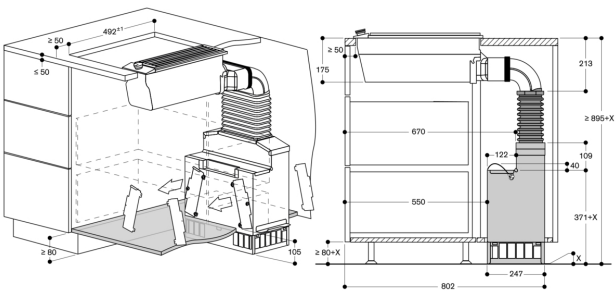
measurements in mm



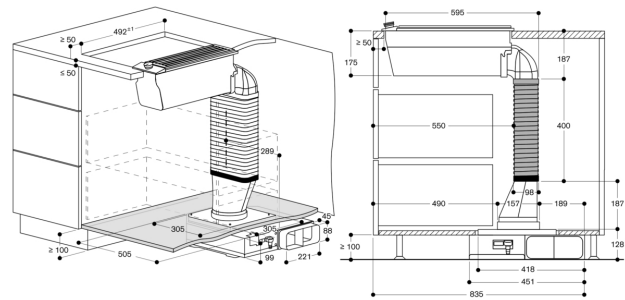
measurements in mm



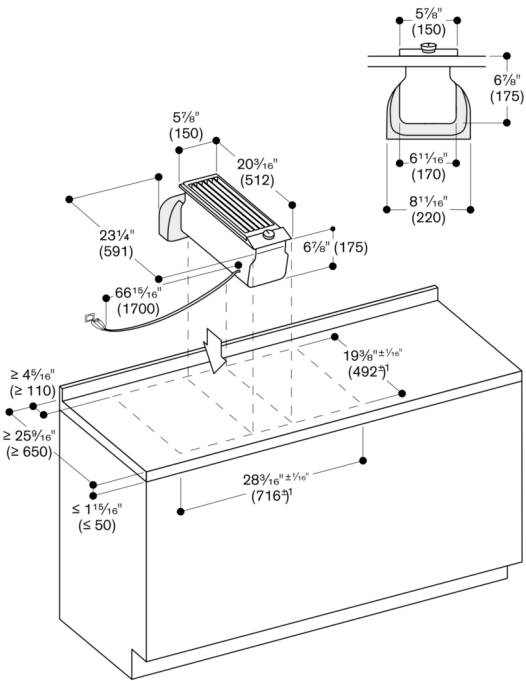
measurements in mm



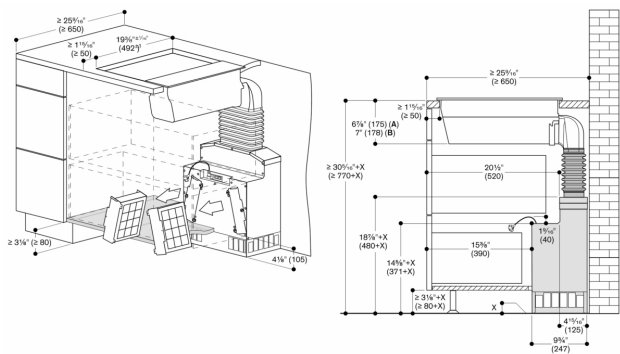
measurements in mm



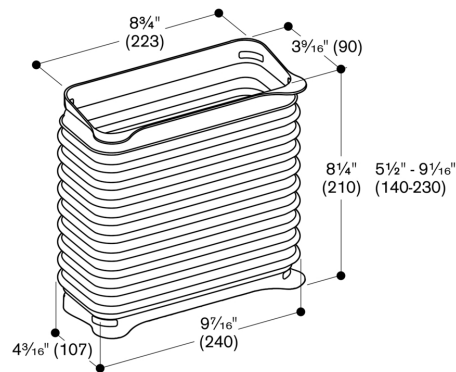
measurements in mm



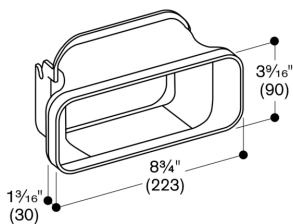
measurements in inches (mm)



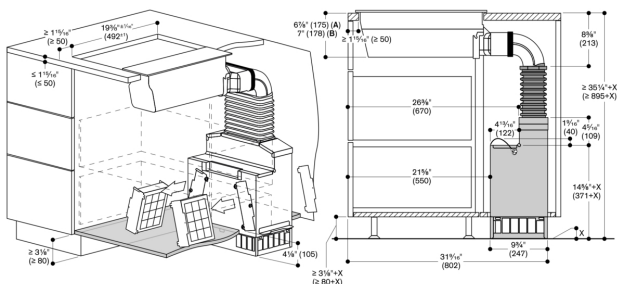
A: Surface mounting  
B: Flush mounting (only VL414)  
measurements in inches (mm)



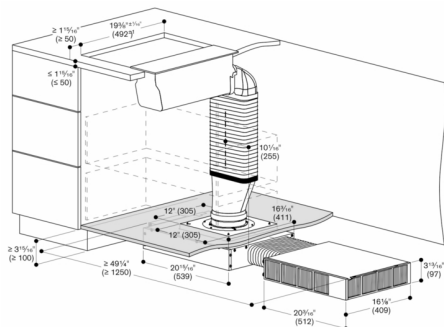
measurements in inches (mm)



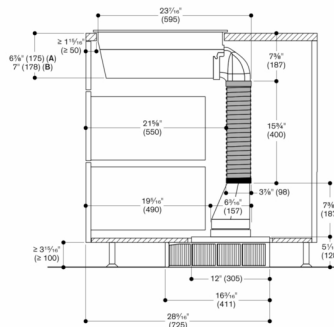
measurements in inches (mm)



A: Surface mounting  
B: Flush mounting (only VL414)  
measurements in inches (mm)



A: Surface mounting  
B: Flush mounting (only VL414)  
measurements in inches (mm)



A: Surface mounting  
B: Flush mounting (only VL414)  
measurements in inches (mm)