

## DAS 4920 Slimline cooker hood with EasySwitch controls for convenient operation



- Classic design – stainless steel panel, 90 cm wide
- Unique user convenience – Con@ctivity
- LED strip for uniform lighting
- Efficient filtration- 10-ply stainless-steel grease filter
- Recirculation mode – Active AirClean or Longlife AirClean filter

EAN: 4002516496038 / Material number: 11862230 /  
Old Material Number: 28S4920SD

<b>Construction type</b>	
Slimline cooker hood	•
<b>Operating modes</b>	
Type of air guide	Can be retrofitted
Recirculation conversion kit (order separately)	DUU 151, DUU 150
Active charcoal filter (order separately)	DKFS 31-P, DKFS 31-R
<b>Design</b>	
Colour	Stainless steel
<b>User convenience</b>	
Miele@home	•
Automatic function Con@ctivity	•
Electronic controls	•
Touch-on-glass controls	•
Booster levels	1
Run-on time 5/15 min.	•
Grease filter saturation indicator	•
Active charcoal filter saturation indicator	•
<b>Efficiency and sustainability</b>	
Annual energy consumption in kWh/year	22,9
Energy efficiency class (A+++ – D)	A+++
ECO motor	•
Grease filtering efficiency class	A
ECO motor (DC motor)	•
PowerManagement system	•
Fluid dynamic efficiency class	A
Lighting efficiency class	A
<b>Cleaning and care</b>	
Easy-to-clean canopy interior – CleanCover	•
<b>Filter system</b>	
Number of dishwasher-safe stainless steel grease filters (10-ply)	1
<b>Lighting</b>	
Number x W	1 x 3 W
Light intensity in lx	300 lx
Colour temperature in K	3500 Kelvin
Dimmer function	•
<b>Fan</b>	
Dual-action blower	•
<b>Exhaust air</b>	
Air throughput in Level 1 (m³/h) according to EN 61591	180
Air throughput in Level 2 (m³/h) according to EN 61591	280
Air throughput in Level 3 (m³/h) according to EN 61591	400
Air throughput in Booster level 1 (m³/h) according to EN 61591	600
Sound power in Level 1 (dB(A) re 1 pW) according to EN 60704-3	37,0
Sound power in Level 2 (dB(A) re 1 pW) according to EN 60704-3	47,0

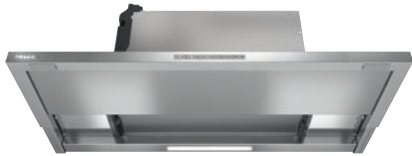
DAS 4920  
Slimline cooker hood  
with EasySwitch controls for convenient operation



EAN: 4002516496038 / Material number: 11862230 /  
Old Material Number: 28S4920SD

Sound power in Level 3 (dB(A) re 1 pW) according to EN 60704-3	55,0
Sound power in Booster level 1 (dB(A) re 1 pW) acc. to EN 60704-3	66,0
Sound pressure in Level 1 (dB(A) re 20 µPa) according to EN 60704-2-13	24,0
Sound pressure in Level 2 (dB(A) re 20 µPa) according to EN 60704-2-13	33,0
Sound pressure in Level 3 (dB(A) re 20 µPa) according to EN 60704-2-13	41,0
Sound pressure in Booster level 1 (dB(A) re 20 µPa) acc. to EN 60704-2-13	56,0
<b>Recirculation</b>	
Air throughput in Level 1 (m³/h) according to EN 61591	165
Air throughput in Level 2 (m³/h) according to EN 61591	265
Air throughput in Intensive level (m³/h) according to EN 61591	585
Air throughput in Level 3 (m³/h) according to EN 61591	380
Sound power in Level 1 (dB(A) re 1 pW) according to EN 60704-3	43,0
Noise power level in Intensive level (dB(A) re 1 pW) according to EN 60704-3	73,0
Sound power in Level 2 (dB(A) re 1 pW) according to EN 60704-3	53,0
Sound power in Level 3 (dB(A) re 1 pW) according to EN 60704-3	61,0
Sound pressure in Level 2 (dB(A) re 20 µPa) according to EN 60704-2-13	39,0
Sound pressure in Level 3 (dB(A) re 20 µPa) according to EN 60704-2-13	48,0
Noise pressure level in Intensive level (dB(A) re 20 µPa) according to EN 60704-2-13	59,0
Sound pressure in Level 1 (dB(A) re 20 µPa) according to EN 60704-2-13	29,0
<b>Safety</b>	
Safety switch-off	•
<b>Technical data</b>	
Canopy width in mm	896
Canopy height in mm	36
Canopy depth in mm	273
Net weight in kg	14,0
Length of supply lead in m	1,5
Standard plug fitted	•
Minimum height above electric hobs in mm	450
Minimum safety distance above gas hobs (max. 12.6 kW total power, burner ≤ 4.5 kW) in mm	650
Number of phases	1
Total rated load in kW	0,09
Voltage in V	230
Fuse rating in A	10
Frequency in Hz	50

DAS 4920  
Slimline cooker hood  
with EasySwitch controls for convenient operation



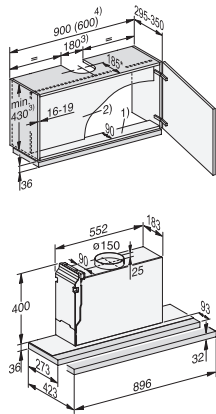
EAN: 4002516496038 / Material number: 11862230 /  
Old Material Number: 28S4920SD

Installation notes	
Extraction ducting connection at top	•
Diameter of exhaust duct in mm	150
Accessories included	
Non-return flap	•

## DAS 4920

### Slimline cooker hood

with EasySwitch controls for convenient operation



DAS2920, DAS2920EXTRA, DAS2922Living, DAS4920,  
Installation drawings

1) The front section of the wall unit must be fitted with a base panel to secure the cooker hood. If the appliance is fitted further back, e.g. to accommodate a front panel, then the shelf depth should be deeper accordingly. , 2) If a partition wall is to be provided in the unit, it must be removable., 3) Extraction, recirculation with conversion kit DUU 150, 4) Mounting is also possible in a 600 mm wide cabinet., \* In this installation situation, the deflector plate is flush with the front edge of the housing unit carcass. , If you wish to position the cooker hood further forward or further back (e.g. because it has a front panel), dimensions have to be adapted accordingly., , Extraction: the height of the wall unit and the cut-out dimensions must take into account any accessories fitted, e.g. silencer, recirculation hood conversion kit).